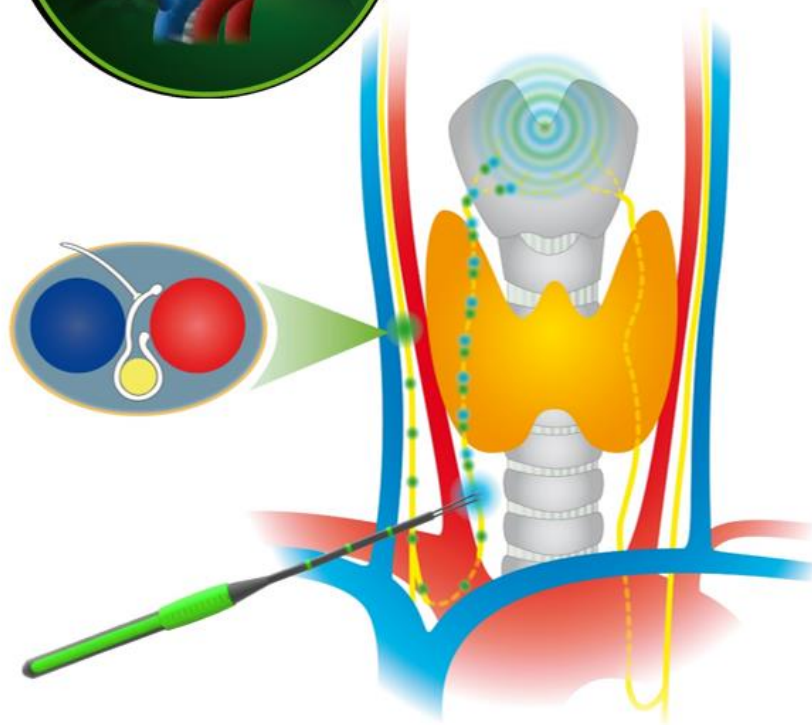




Thyroid



- Why IONM during Thyroid surgery:
Recurrent Laryngeal Nerve (RLN) is at risk
→ with IONM, the nerve can be localised
- 1 channel EMG at vocal cord (M. vocalis)
- Measurement with electrodes attached / integrated on the tube
- Stimulation of the nerve with handheld stimulation probes
- Optional: Continuous IONM (cIONM) with atraumatic saxophone[®] electrode

